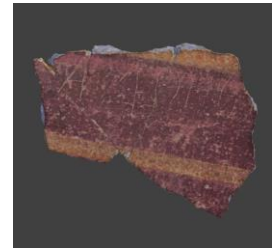


MUSEUM OF ANCIENT CULTURES

Incised Fresco Fragment

MU396



Student-led inquiry topics and useful resources to begin your research

1. MU396 is a small fragment of a fresco. What is a fresco?
2. The decorative styles of Pompeian houses were classified into four 'styles' by August Mau in 1882. What are these four styles? Provide an example that illustrates each of these styles.
3. MU396 displays evidence of ancient graffiti. How do examples of graffiti contribute to our understanding of life in Pompeii and Herculaneum? Provide specific examples to support your answer.

© Macquarie University 2018