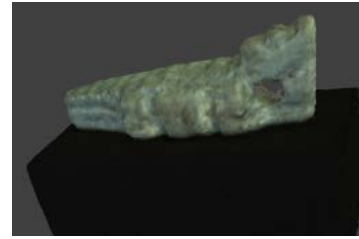


Sobek Amulet

MU3286



Inquiry topics and useful resources

1. What is the difference between “theriomorphic” and “therioanthropic” representations of Ancient Egyptian gods?
2. Can you find a specific example of Sobek depicted in each of these two forms?



Here are some good places to look. (*Hint: use the search function to find relevant artefacts. Think of useful synonyms for your search inquiry*).

- British Museum, London. Online Collection Database

https://www.britishmuseum.org/research/collection_online

- University College, London (UCL). Petrie Collection Online Catalogue

<http://petriecat.museums.ucl.ac.uk>

- Metropolitan Museum of Art, New York

<https://www.metmuseum.org>

- Museum of Fine Arts, Boston

<https://www.mfa.org/collections/search>

3. Why do you think the same god can be represented in more than one way in Ancient Egyptian religion and thought?
4. Why might the Egyptians chose dangerous creatures as symbols of protection? Apart from Sobek, can you find another example of this practice?
5. How can MU3286 contribute to our understanding of religion in New Kingdom Egypt?

